

462x-CSI camera

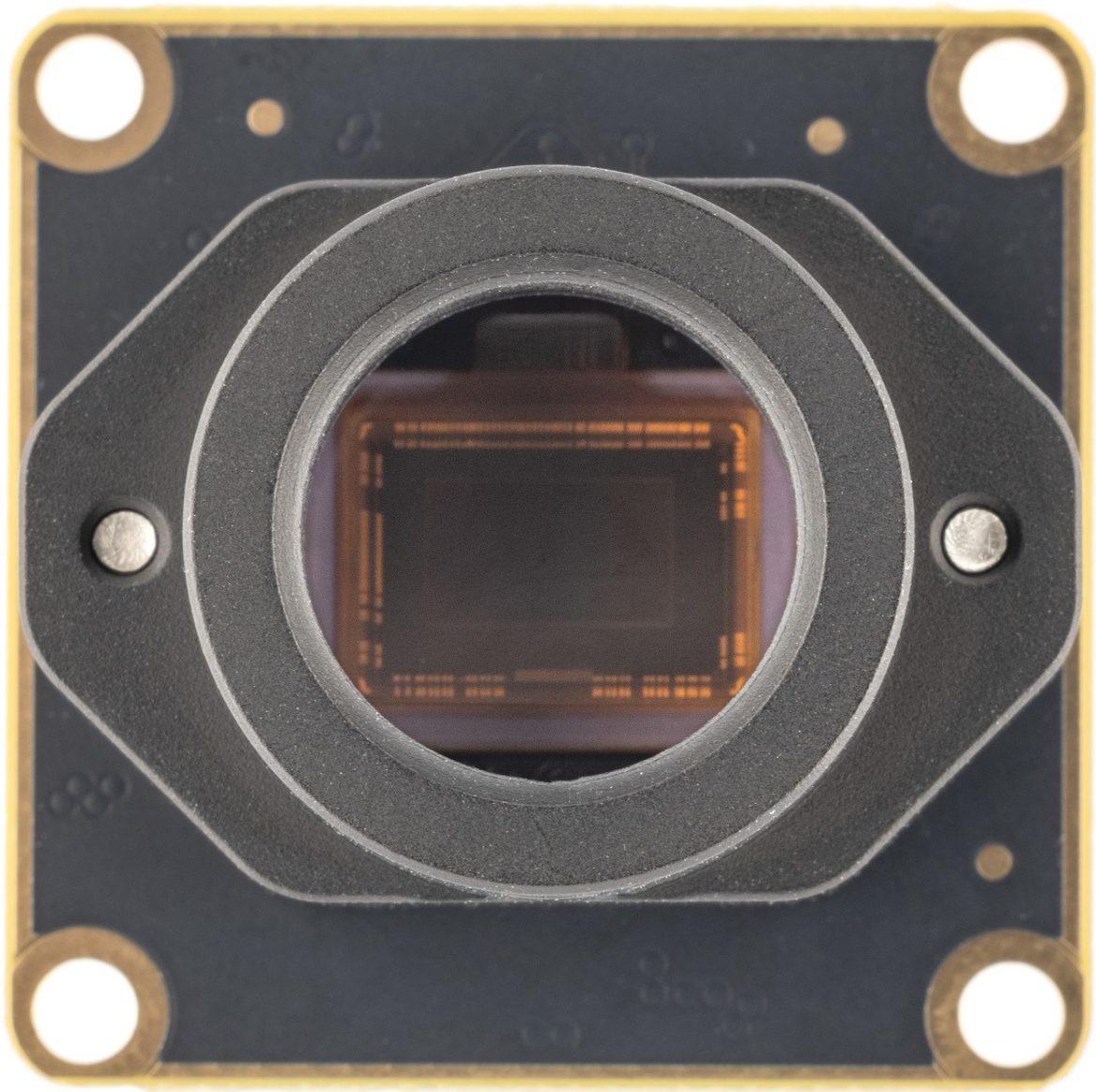
Low-light MIPI for Raspberry Pi & Jetson. The 462x-CSI-M12 outputs raw stream through a 4-lane CSI-2 connector while keeping the price and footprint tiny.

- [Overview](#)
- [Pinout](#)
- [Dimensions](#)

Overview

Low-light MIPI for Raspberry Pi & Jetson. The 462x-CSI-M12 outputs raw stream through a 4-lane CSI-2 connector while keeping the price and footprint tiny.

- IMX462 RGB or Mono sensor, M12/M12L or bare board
- 22-pin FFC (0.5mm) standard connector
- <1 W typical - perfect for edge-AI, night-vision robots

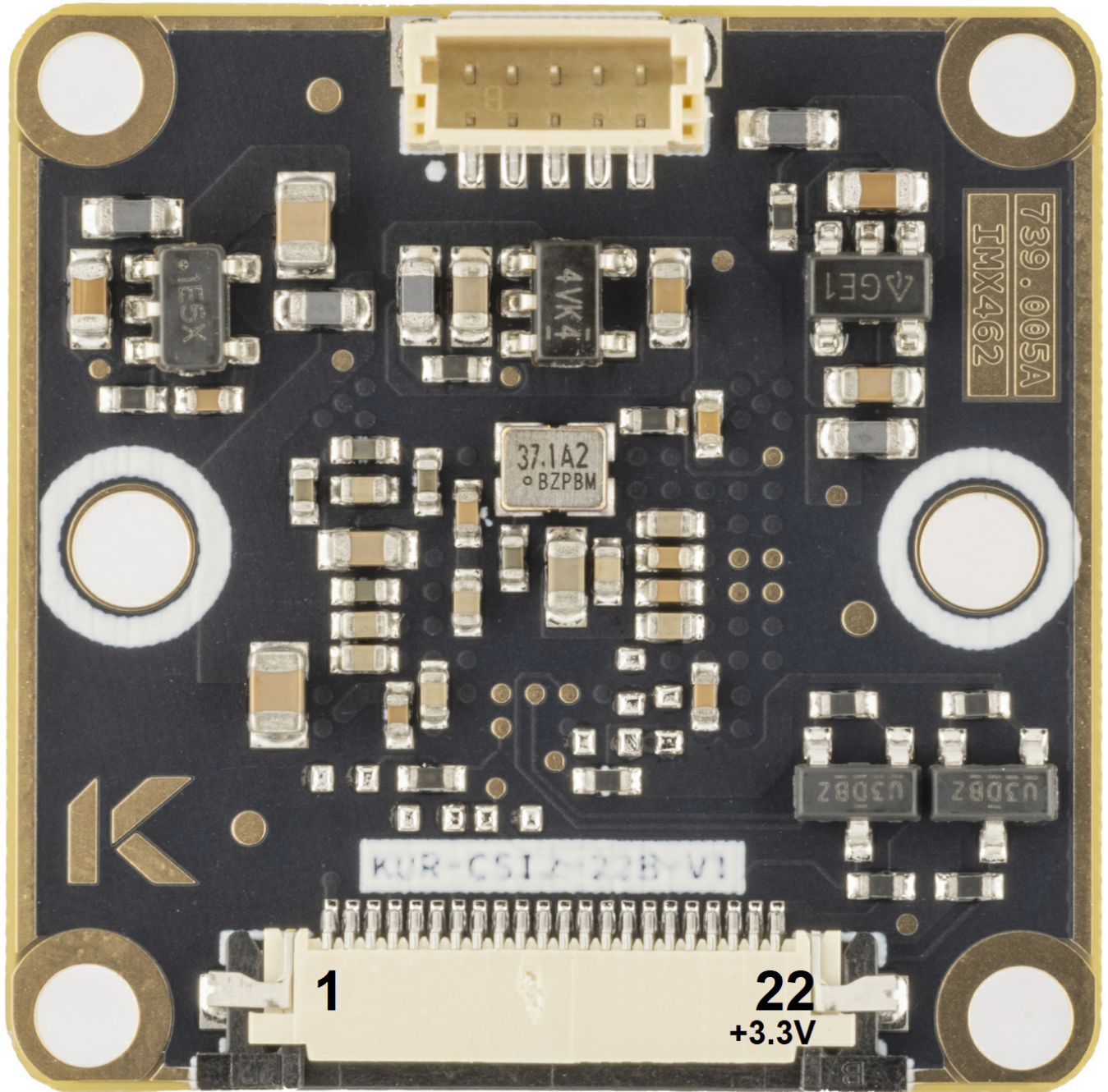


Camera variants

SKU	Lens mount	Chroma	Note
462C-CSI-M12	9.5mm for wide angle lenses	RGB Color	Most common use for wide angle and fish-eye lenses.
462C-CSI-M12L	14.7mm for regular and telephoto lenses	RGB Color	Modification for lenses above 6mm (typical)
462M-CSI-M12	9.5mm for wide angle lenses	Mono	Same as C3-462C-M12 but Mono sensor for better light sensitivity
462M-CSI-M12L	14.7mm for regular and telephoto lenses	Mono	Same as C3-462C-M12L but Mono sensor for better light sensitivity

Pinout

XMASTER | XHS | XVS | TRIG | GND



MIPI CSI2 wiring

Interface connector 22pin 0.5mm pitch 687122183622 from Würth Elektronik. Top facing pins.

Pin	Signal	Description
1	GND	
2	D0_N	
3	D0_P	
4	GND	
5	D1_N	
6	D1_P	
7	GND	
8	CLK_N	
9	CLK_P	
10	GND	
11	D2_N	
12	D2_P	
13	GND	
14	D3_N	
15	D3_P	
16	GND	
17	ENABLE	Wired to sensor XCLR
18	N.C.	
19	GND	
20	SCL	
21	SDA	
22	+3.3V	

AUX wiring

Interface connector 5 pin 1mm pitch 665305124022 from Würth Elektronik.

Pin	Signal	Description
1	XMASTER	Master / Slave selection
2	XHS	Horizontal sync signal
3	XVS	Vertical sync signal
4	TRIG	Trigger mode input
5	GND	

Dimensions

- Board dimensions: 26 x 26 x 8.31mm
- Weight: 2.78g

