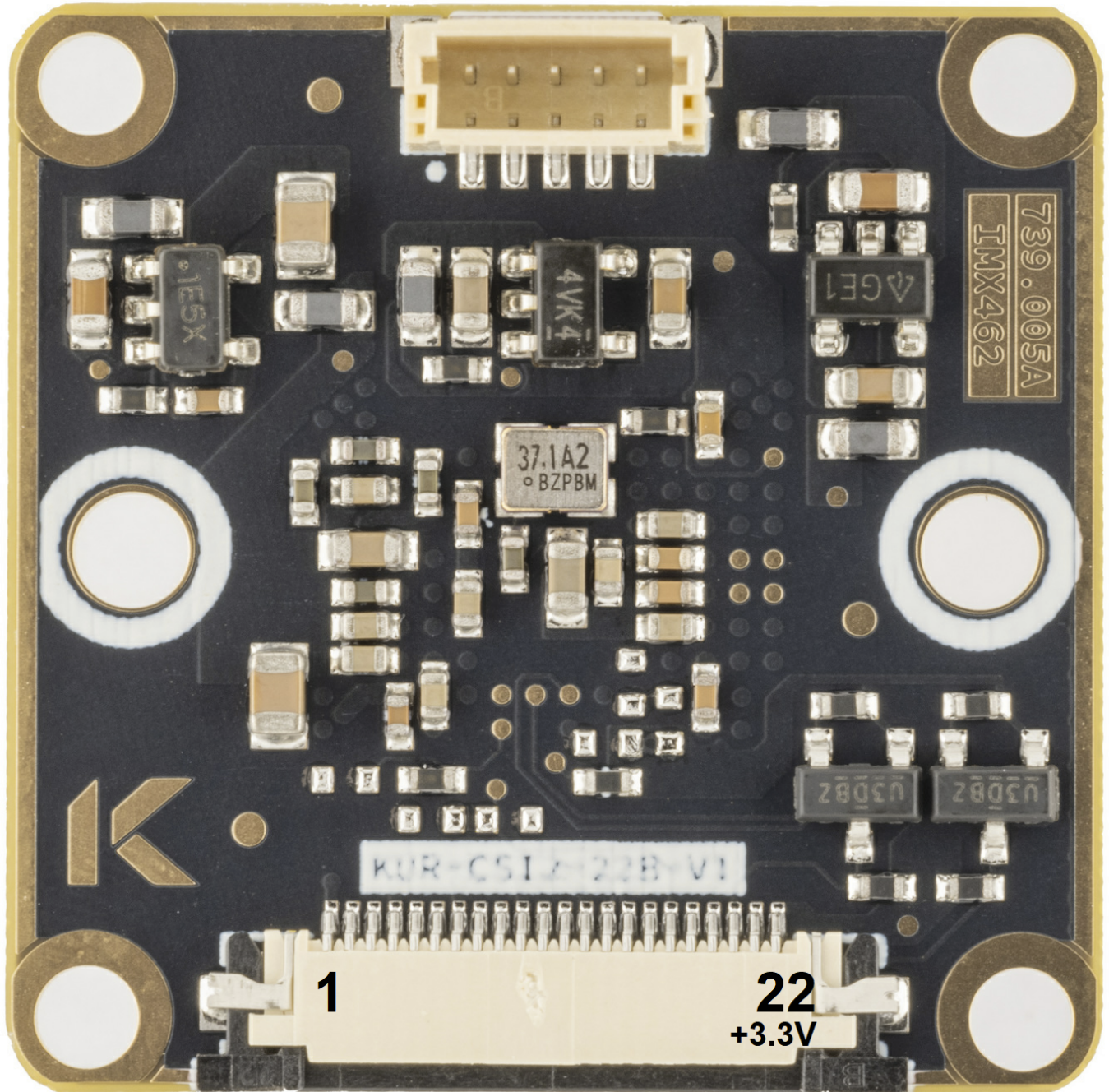


Pinout

XMASTER | XHS | XVS | TRIG | GND



MIPI CSI2 wiring

Interface connector 22pin 0.5mm pitch 687122183622 from Würth Elektronik. Top facing pins.

Pin	Signal	Description
1	GND	
2	D0_N	
3	D0_P	
4	GND	
5	D1_N	
6	D1_P	
7	GND	
8	CLK_N	
9	CLK_P	
10	GND	
11	D2_N	
12	D2_P	
13	GND	
14	D3_N	
15	D3_P	
16	GND	
17	ENABLE	Wired to sensor XCLR
18	N.C.	
19	GND	
20	SCL	
21	SDA	
22	+3.3V	

AUX wiring

Interface connector 5 pin 1mm pitch 665305124022 from Würth Elektronik.

Pin	Signal	Description
1	XMASTER	Master / Slave selection
2	XHS	Horizontal sync signal
3	XVS	Vertical sync signal
4	TRIG	Trigger mode input
5	GND	

Revision #4
Created 25 June 2025 08:10:51 by Saulius
Updated 25 June 2025 08:33:11 by Saulius