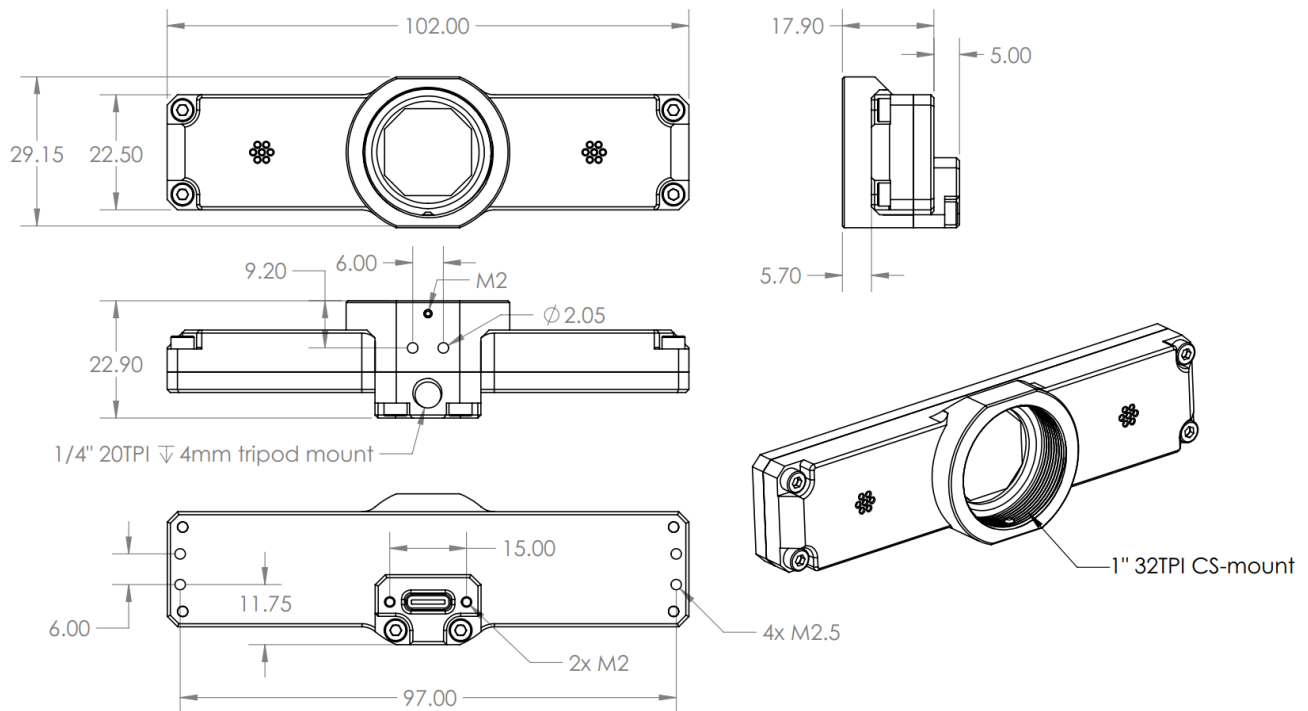


Dimensions and kit parts

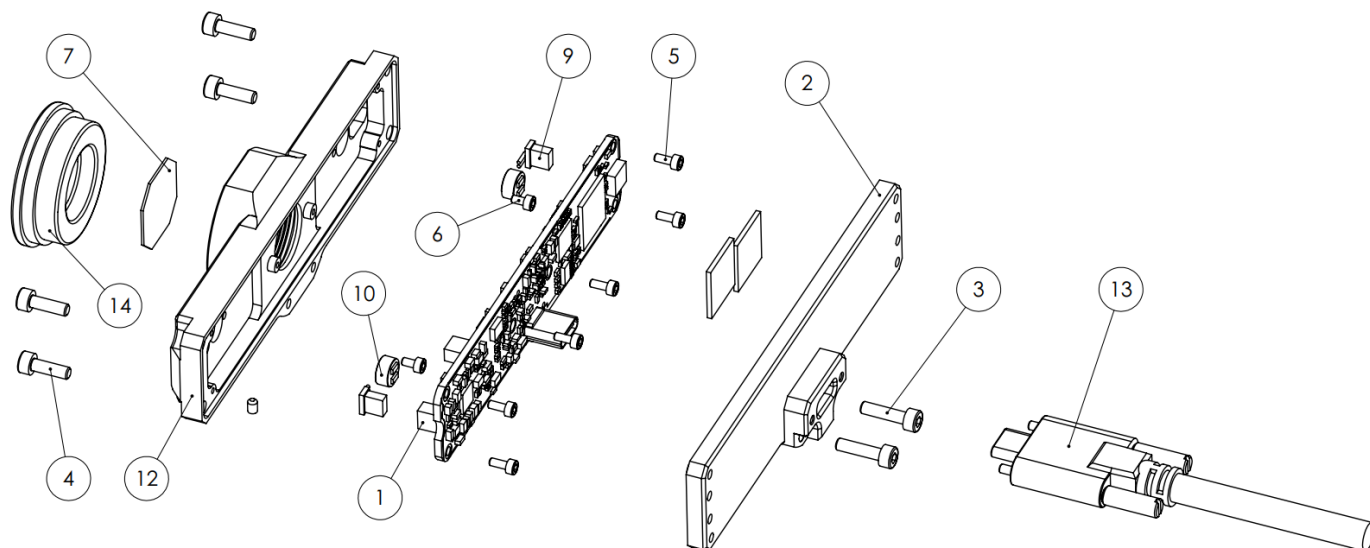
Detailed reworked Brio view



Weight

Full KIT weight (not including camera board): 45g

Exploded view



Part list

Item Nr	Part number	Qty	Notes
1	BRIO_PCBA	1	Extracted Brio PCB assembly
2	LP0534-P0003C	1	Back plate
3	DIN 912 M2.5 x 10	2	
4	DIN 912 M2.5 x 8	4	
5	DIN 912 M1.6 x 4	6	
6	DIN 912 M1.6 x 3	2	
7	FILTER	1	Optional optical filter
8	DIN 916 - M2 x 2	1	Optional lens retaining set screw
9			Brio microphone connector
10			Brio microphone
11			Brio silicone thermal pads
12	LP0534-P0005C	1	Front plate
13			Optional USB-C cable with lock screws

14	LP0262-P0008	1	Optional dust cap
----	--------------	---	-------------------

Revision #5
Created 18 April 2021 08:33:31 by Saulius
Updated 22 February 2023 10:17:29 by Saulius