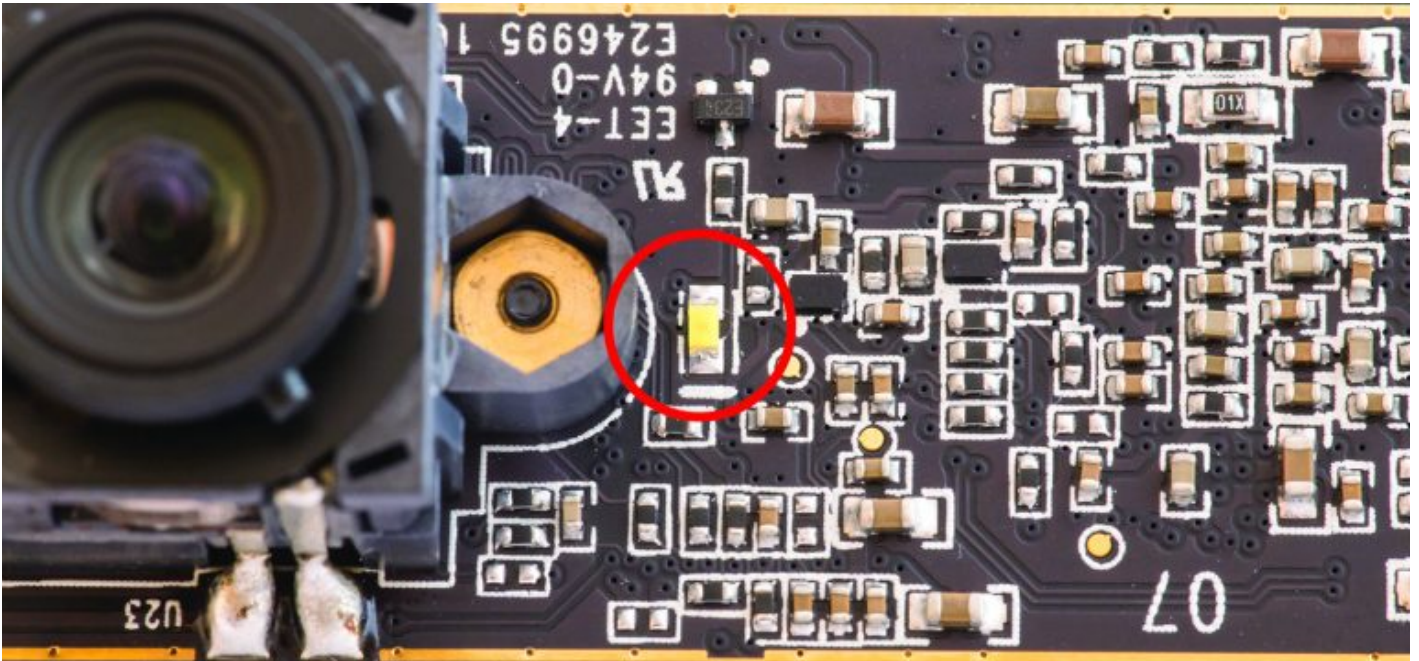
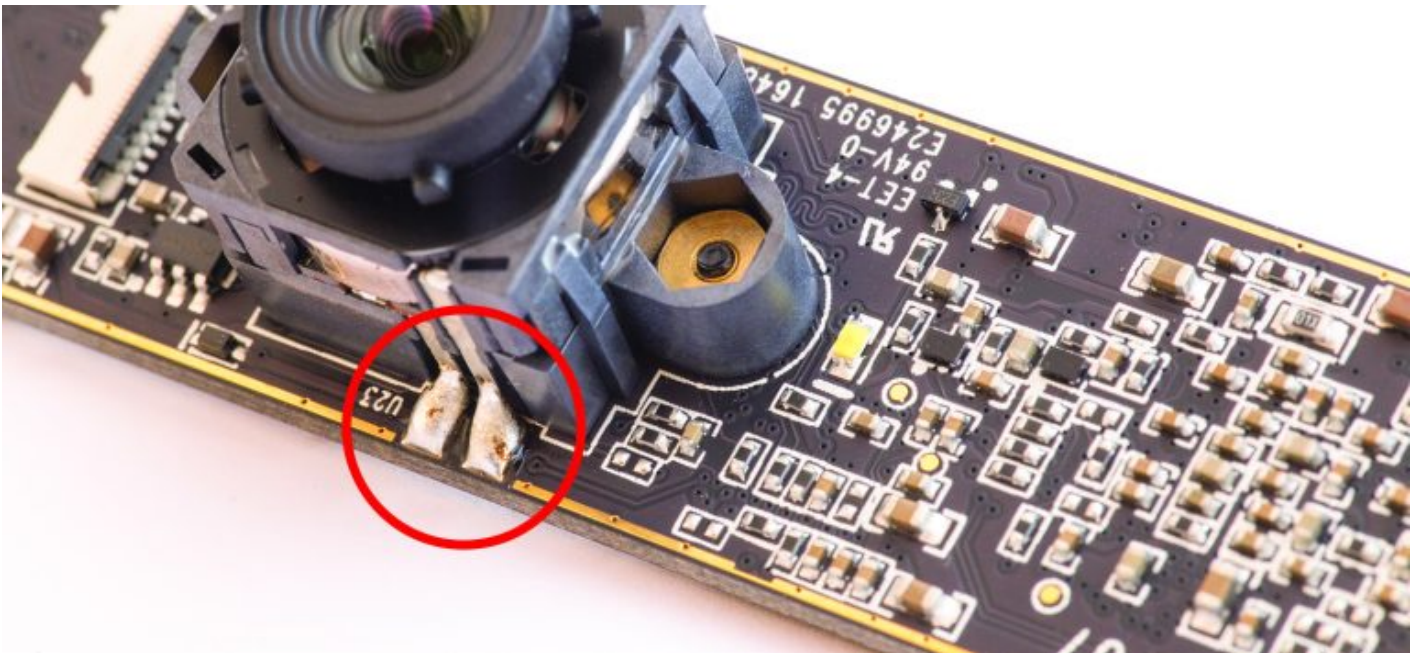


Modify camera board

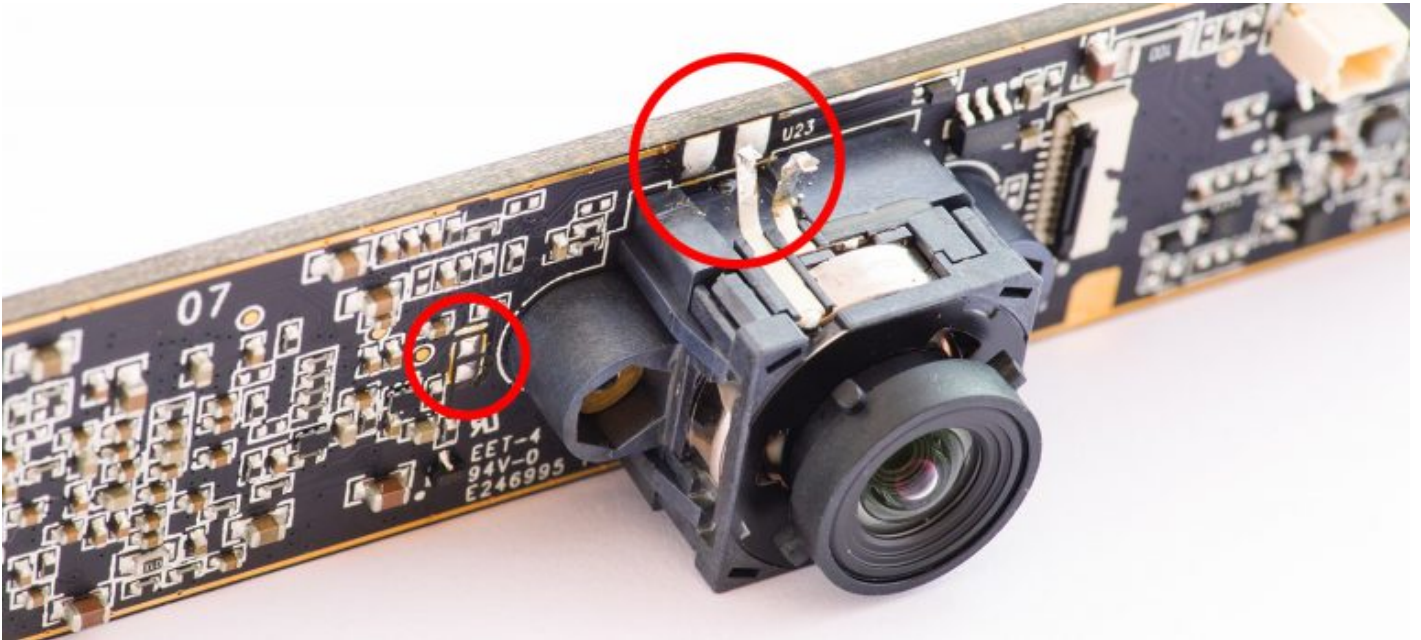
Camera has nasty white LED facing lens direction. If you don't remove it LED will shine inside enclosure directly into sensor. Unsolder it.



Lens focusing coil is soldered to PCB. These pins also must be un-soldered.



After detaching these components PCB should look like this. It is the only soldering operation required.



Lens assembly is held together by two screws. This is last tear-down operation. Be careful not to leave your fingerprints on the sensor. If you don't feel comfortable with bare sensor exposed to your workbench, leave it attached for now and remove right before screwing camera PCB into new enclosure.

Revision #1

Created 28 July 2020 09:29:49 by Saulius

Updated 18 April 2021 08:31:05 by Saulius