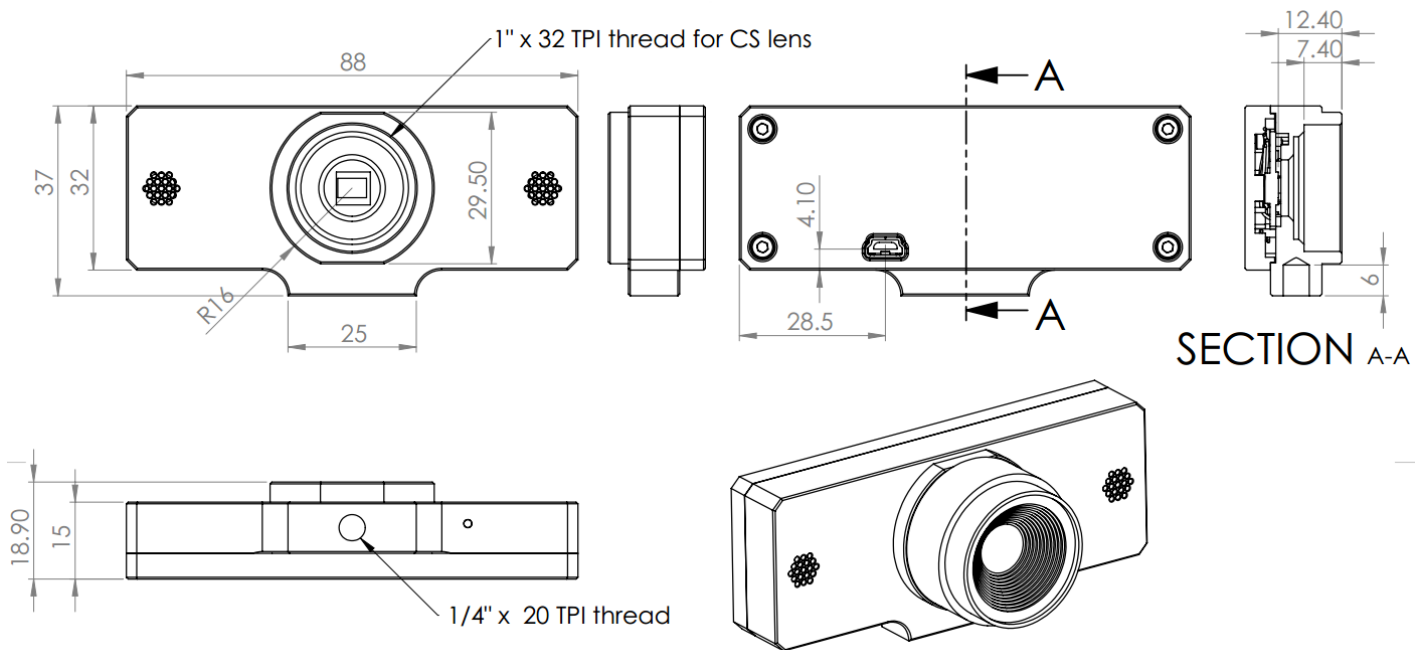
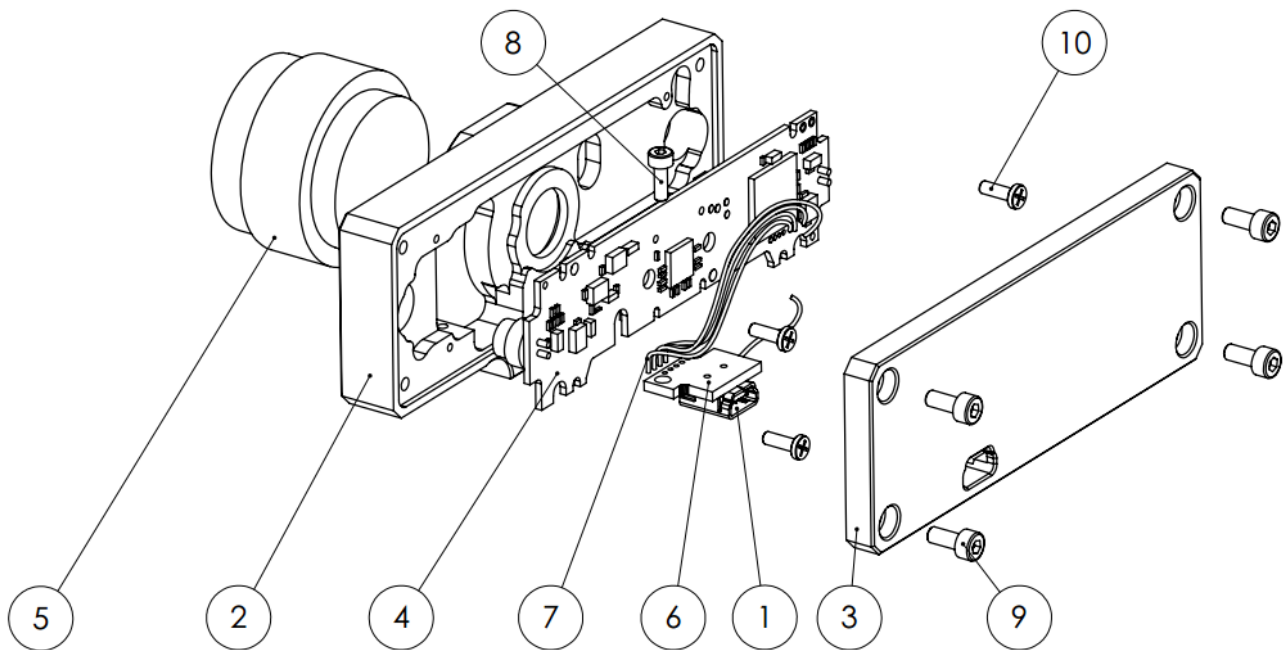


# mk1 dimensions and kit parts

C920 rework kit dimensions comes as a kit. Main parts are 2 aluminum parts, when assembled dimensions are 88\*37\*18.9mm. Kit also includes allen 2x keys and 5 DIN 912 screws (1x M2x5, 4xM2.5x6). USB board with soldered connector also included.



Exploded view



| Item nr | Part                  | Description                     | Qty |
|---------|-----------------------|---------------------------------|-----|
| 1       | USB mini socket       |                                 | 1   |
| 2       | LP0144-P0001          |                                 | 1   |
| 3       | LP0144-P0002          |                                 | 1   |
| 4       |                       | PCBA extracted from C920 camera | 1   |
| 5       |                       | Lens                            | 1   |
| 6       | USB mini PCB assembly |                                 | 1   |
| 7       |                       | Wires                           | 1   |
| 8       | DIN912 M2x5           |                                 | 1   |
| 9       | DIN912 M2.5x6         |                                 | 4   |
| 10      |                       | Camera screws                   | 4   |

## 3D model

3D model is uploaded to **github repository**

Revision #5

Created 28 July 2020 09:00:12 by Saulius

Updated 29 May 2021 07:20:01 by Saulius