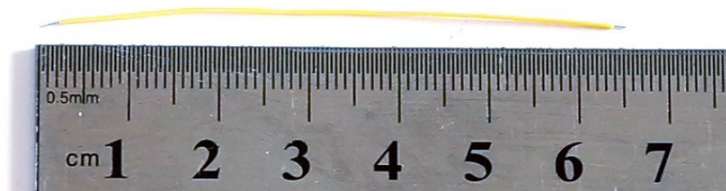


mk2 C920 PCBA wiring

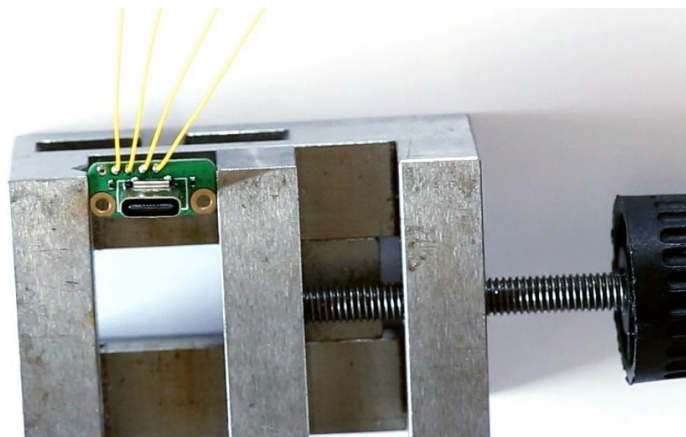
Camera kit has internal USB-C type connector also back plate has features to use USB-C cable with lock screws.

Prepare USB adapter

Cut and strip included Kynar wire in 4 pieces.



Solder prepared wires to USB-C adapter (please note do not solder a wire to the left most reserved pad on USB-C adapter)

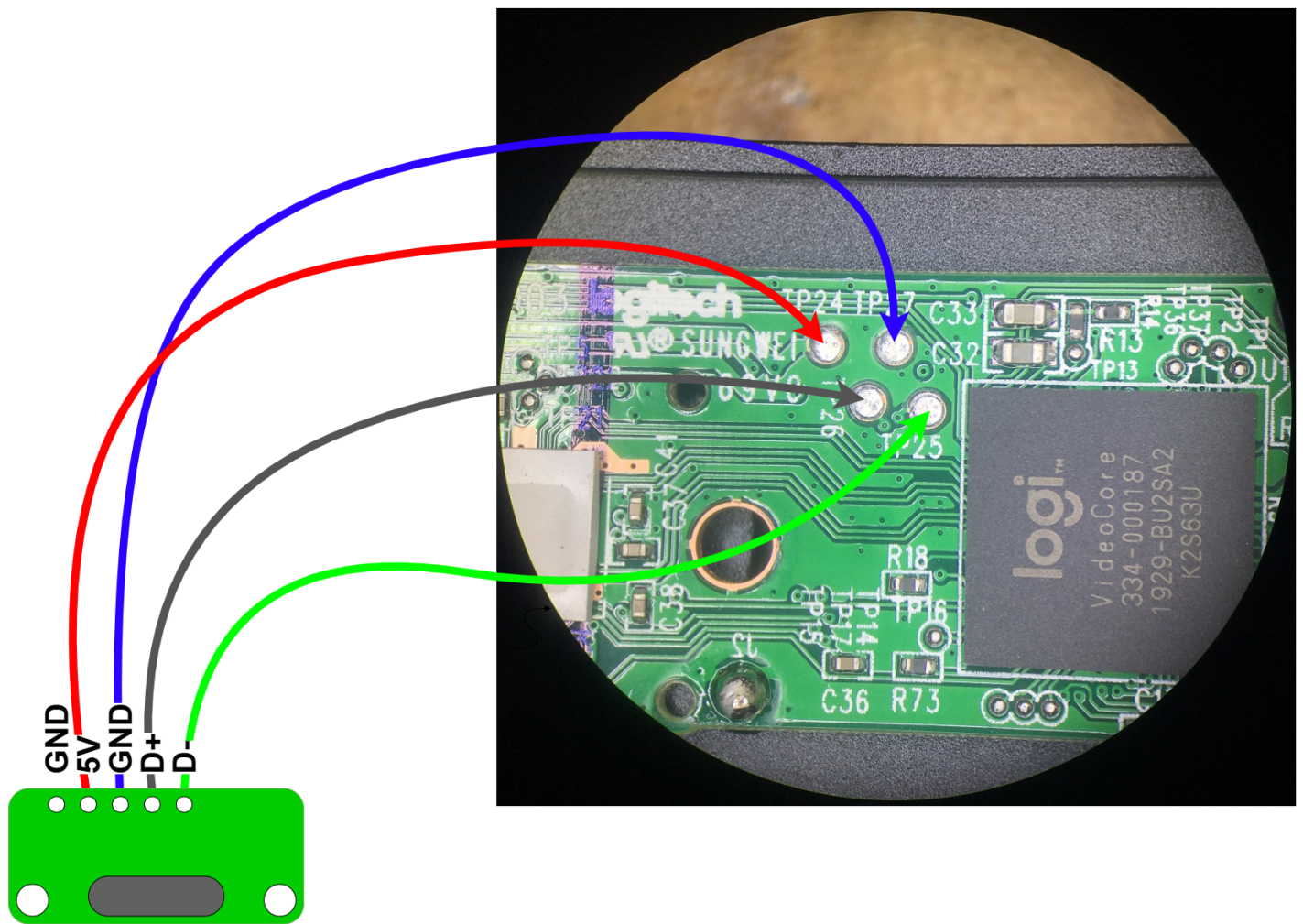


C920 PCBA to USB adapter wiring

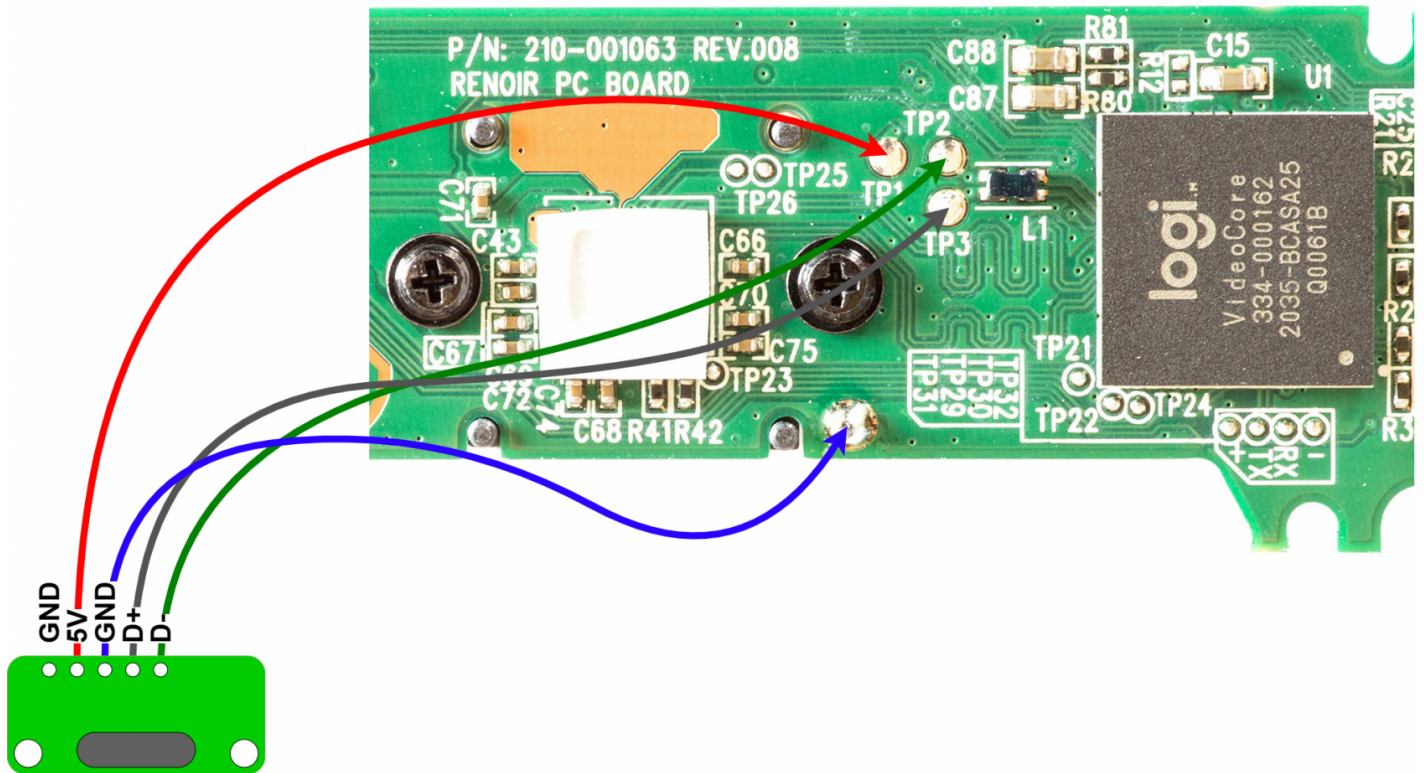
There are at least two C920 board major versions with different test point layouts. Identify your board and solder wires accordingly.

New C920 board wiring

While component placement is different, same Test Pin (TP) arrangement is valid for **C930e** cameras.



Old C920 board wiring



Revision #10

Created 29 May 2021 05:54:29 by Saulius

Updated 30 August 2021 14:28:35 by Saulius