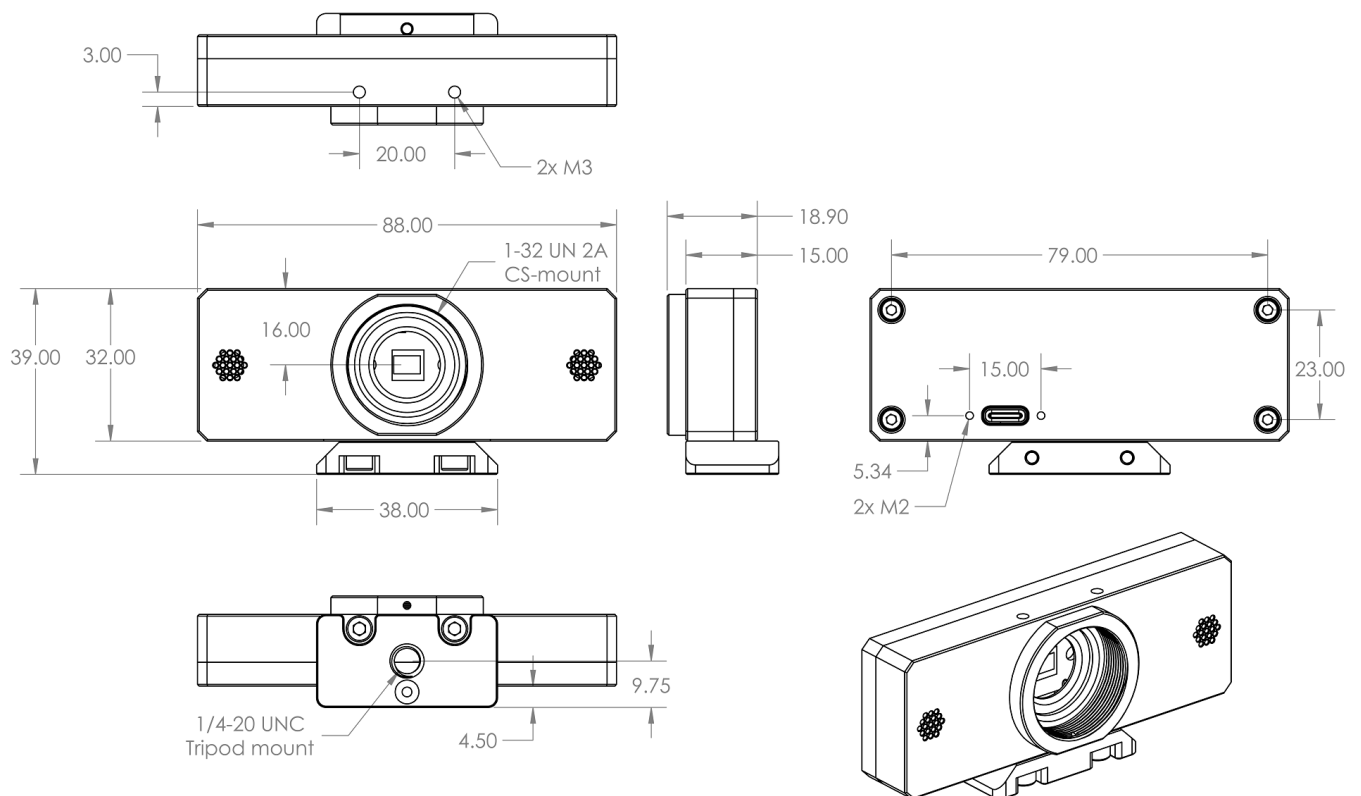
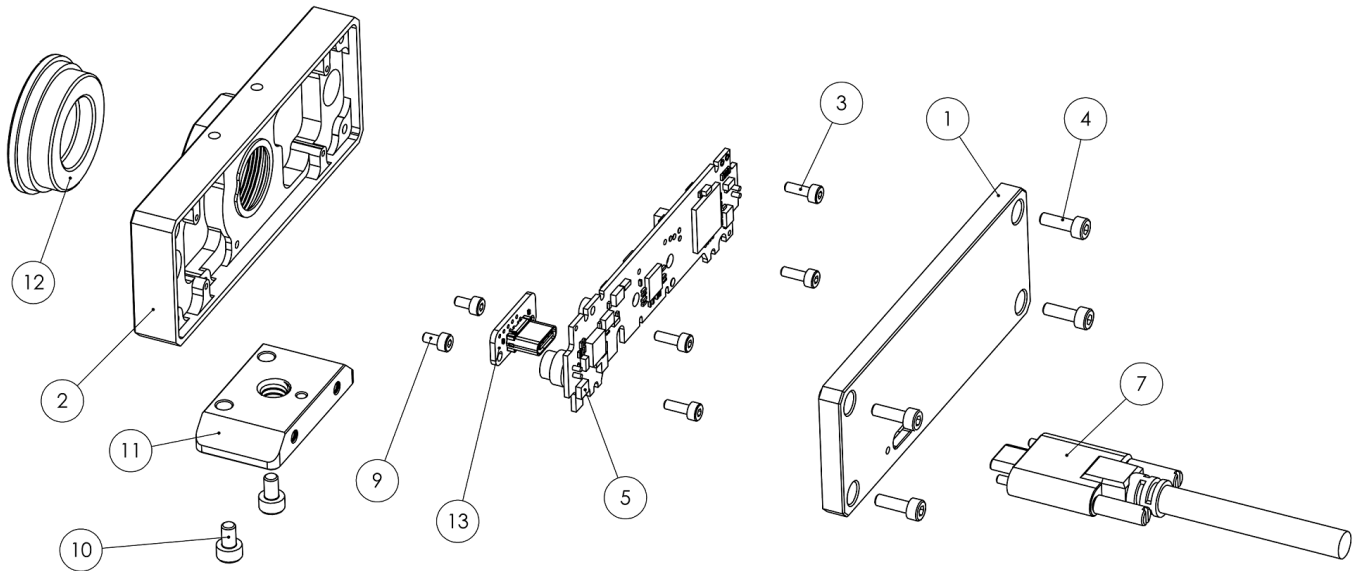


mk2 dimensions and kit parts

C920 rework kit dimensions comes as a kit. Main parts are 2 aluminum parts, when assembled dimensions are 88*32*18.9mm.



Exploded view



Item nr	Part	Description	Qty
1	LP0144-P0002C	Back plate	1
2	LP0144-P0011C	Front plate	1
3	DIN912 M1.6 x 5	Screws to mount C920 PCBA	4
4	DIN912 M2.5 x 8		4
5		C920 PCBA	1
7		USB-C cable	1
9	DIN912 M2 x 4	Screws to mount USB-C adapter	2
10	DIN912 M3 x 5	Screws to mount tripod plate	2
11	QR_PLATE_20	Tripod and Arca-Swiss mount plate	1
12		Dust cap	1
13		USB-C adapter board	1

Revision #5

Created 29 May 2021 07:05:45 by Saulius

Updated 29 May 2021 07:43:41 by Saulius