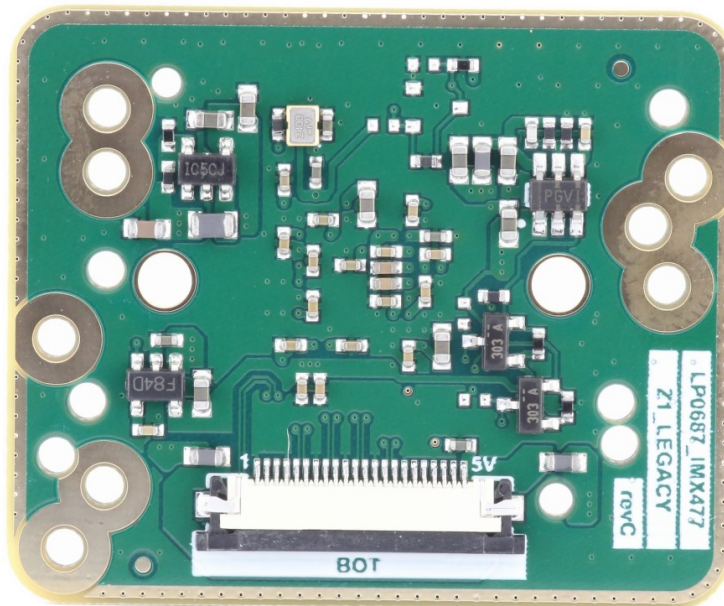


FFC connector pin-out

IMX477 camera board has 22pin 0.5mm spaced pitch FFC connector 687122183722 from Würth Elektronik. Cable orientation is bottom (see notes on the PCB).



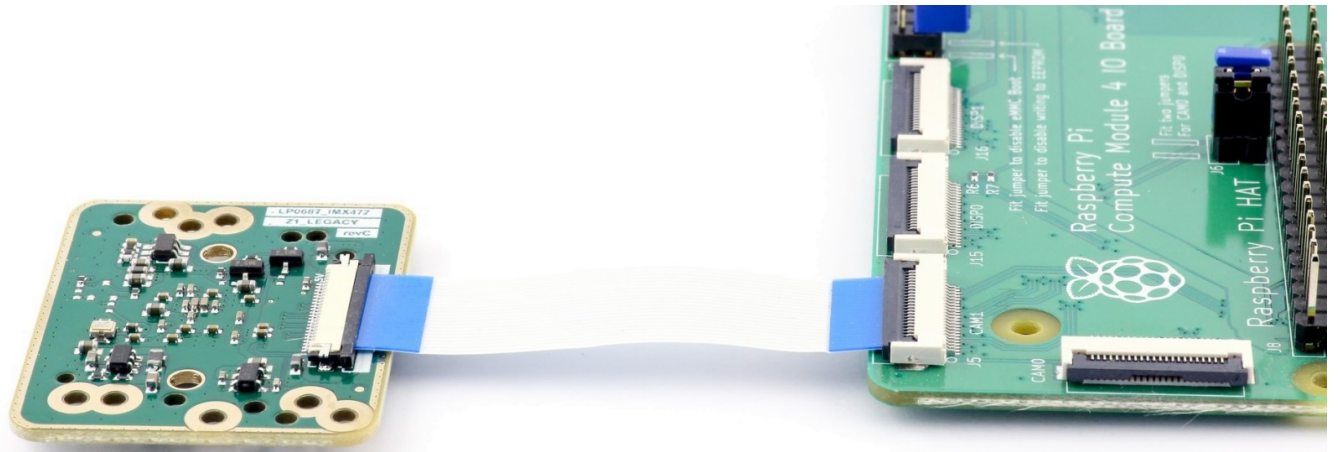
Pinout table

Pin nr	Signal	Note
1	GND	
2	MIPI_D1_N	
3	MIPI_D1_P	
4	GND	
5	MIPI_D2_N	
6	MIPI_D2_P	
7	GND	
8	MIPI_CLK_N	

9	MIPI_CLK_P	
10	GND	
11	MIPI_D3_N	
12	MIPI_D3_P	
13	GND	
14	MIPI_D4_N	
15	MIPI_D4_P	
16	GND	
17	SEN_PWR_2.8V	Sensor analog power supply
18	LED	Not used
19	GND	
20	SCL	
21	SDA	
22	3.3V	Logic power supply

Connectivity with Raspberry PI compute module

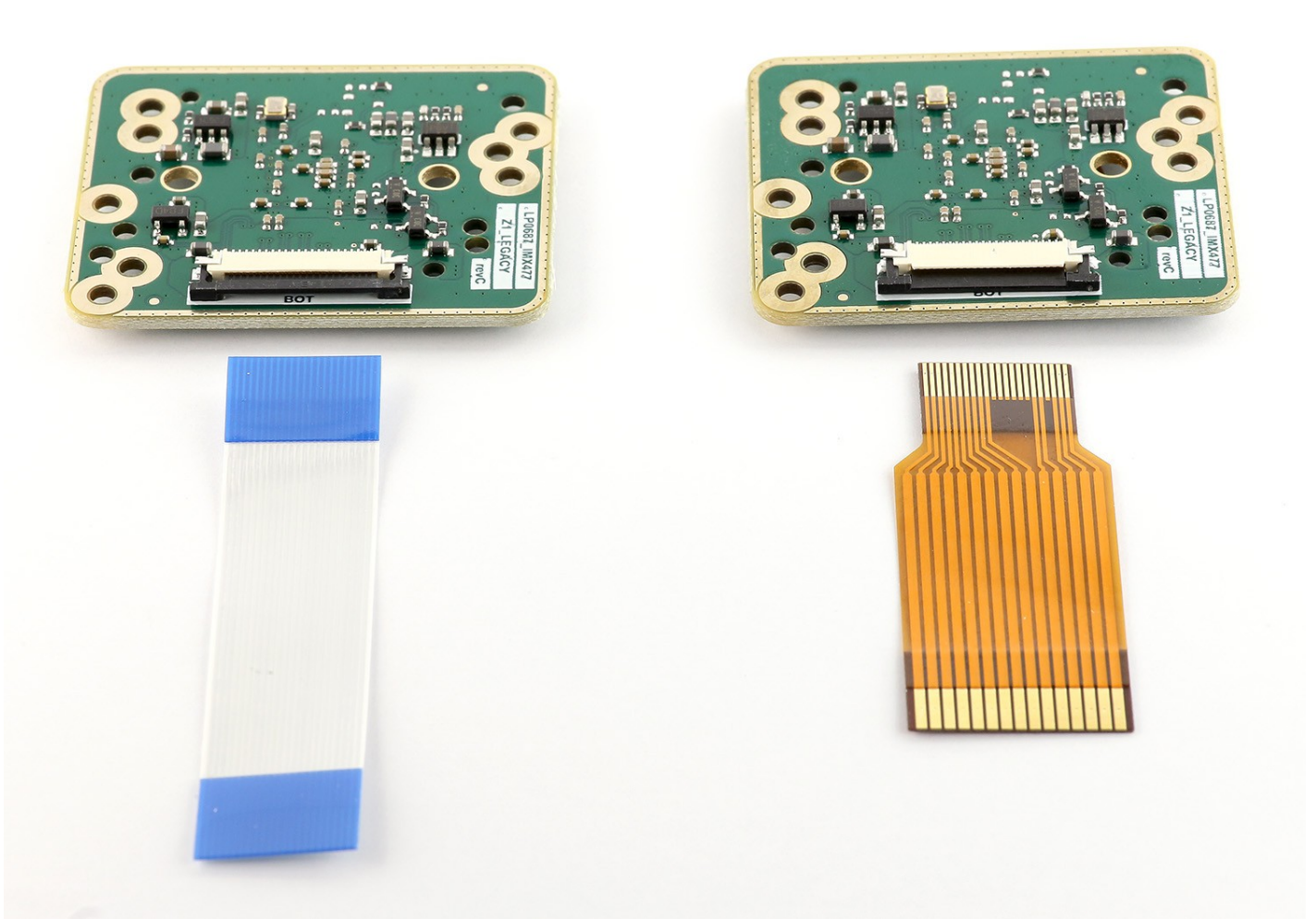
Use 22pin 0.5mm pitch FFC cable like 687622050002 (5cm) / 687622100002 (10cm) from Würth Elektronik



TOP / BOT connector

Initially, we designed an IMX477 board to be used with Raspberry Pi CM4 IO board and selected 22pin 0.5mm pitch connector contacts facing BOTTOM. It was a direct connection from IMX477 to the CM4 IO board with non reversed FFC cable.

We have replaced the connector facing the TOP side to be more flexible. It allows the same connection to CM4 IO board with reversed FFC cable. Also, standard 22pin 0.5mm to 15pin 1.0mm cables can be used to attach to more boards like NVIDIA Jetson, or other modifications of the Raspberry Pi compute modules.



Revision #5

Created 3 May 2022 05:16:18 by Saulius

Updated 8 May 2023 13:36:53 by Saulius