

L102-2.11-M12

Description

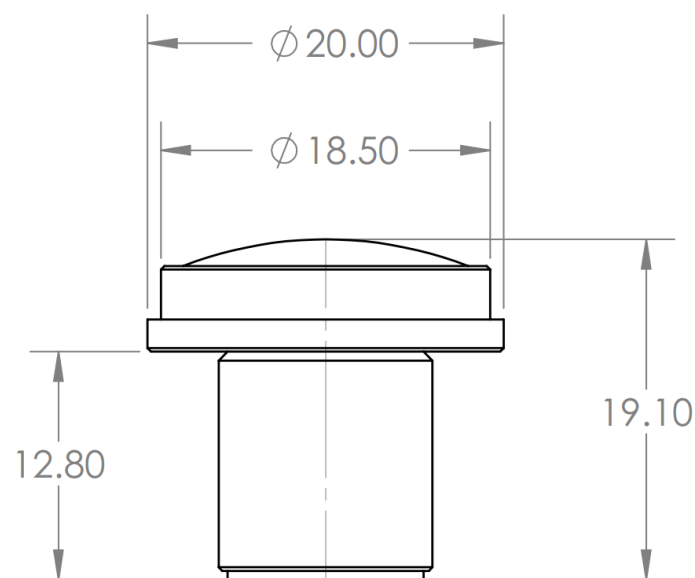
2.11mm M12 wide angle fixed focus lens



Specifications

Focal Length	2.11mm
Aperture	f/1.8
Image Size	6.7mm
Angle of View	<ul style="list-style-type: none">• D: 190°• H: 142°• V: 102°
Mount Type	M12 x 0.5-6g
Minimum Object Distance	0.3m
Back focal length	4.8mm
External Dimensions	<ul style="list-style-type: none">• D=20mm• L=19.1mm
AR coating	Yes
Net Weight	7g

Dimensions



Revision #3
Created 25 April 2021 12:39:13 by Saulius
Updated 29 May 2025 13:29:49 by Saulius