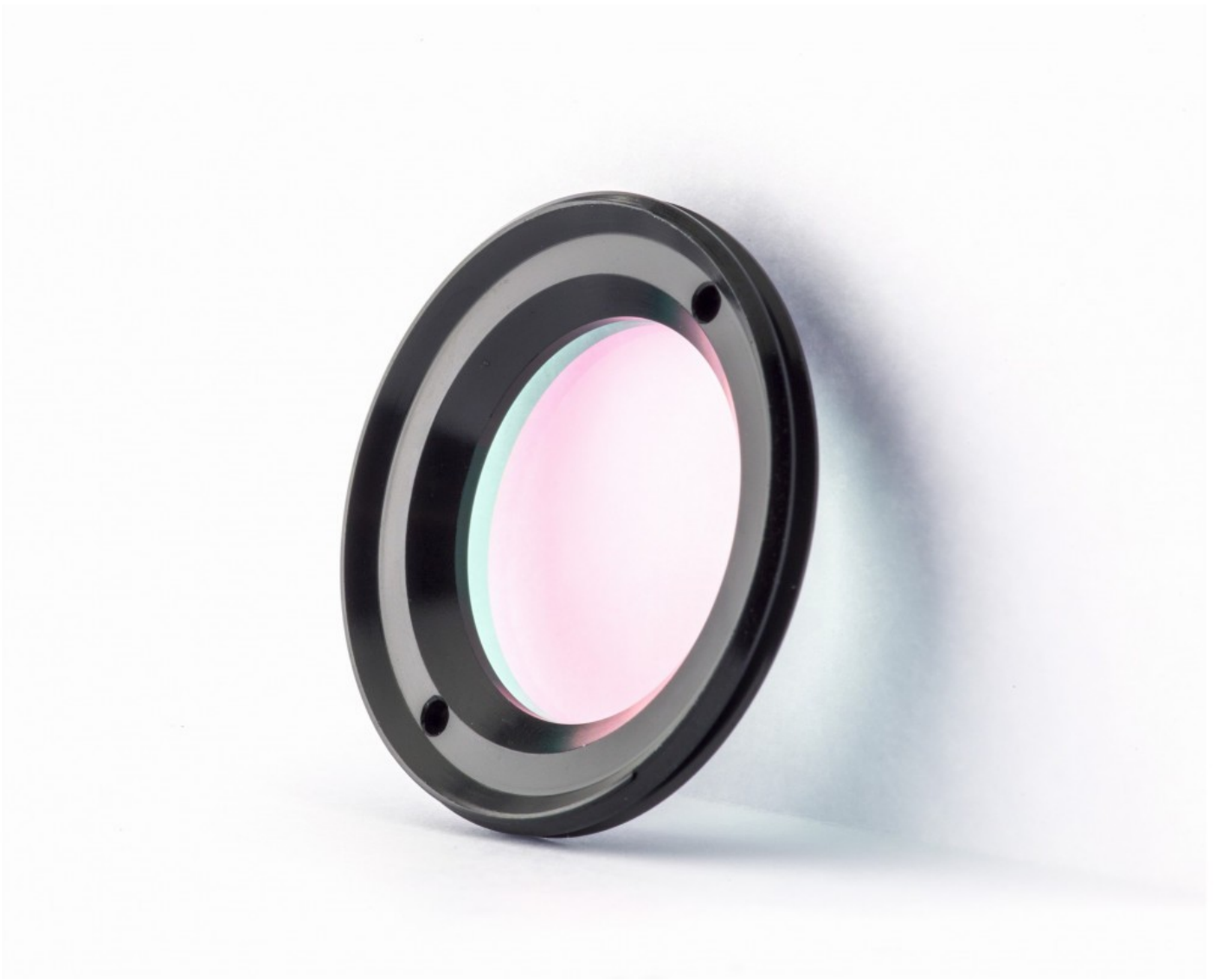


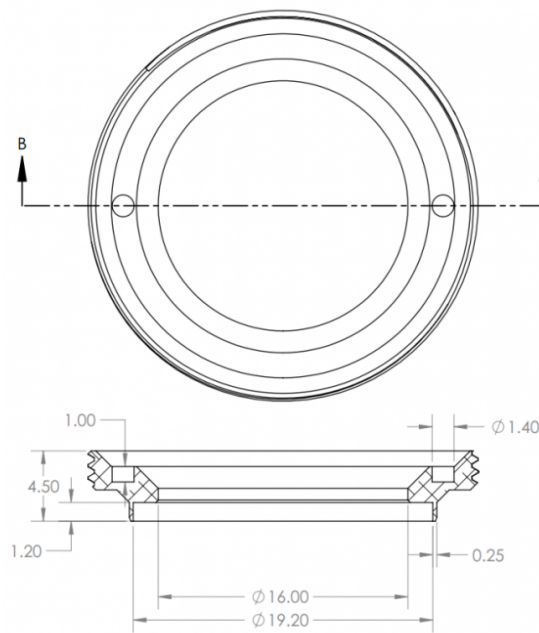
# D19x1\_IRCUT\_SCREWIN - Screw in low profile IR-CUT filter

Low profile screw-in IR CUT filter is designed for CS and C-mount cameras. Filter can be used with most lenses without disassembling camera or lens.



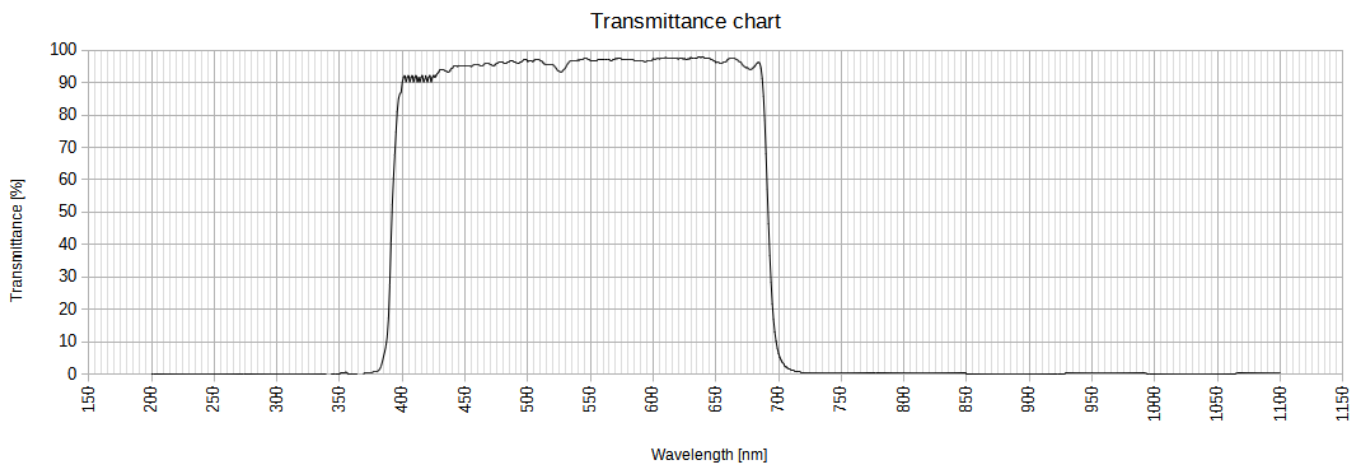
## Dimensions

- Diameter: 25.4+/-0.1mm
- Thickness: 4.5+/-0.1mm



## Specifications

- Coating: AR+UV+IR block
- Transmittance(avg) > 90%@370-650nm
- OD value: >2@750-1050nm



## Tool

Knippex **48 11 J1** Precision Circlip Pliers are recommended to install and remove filter.

- Tips (diameter):  $\phi 1.3$  mm

- Size of bore: Ø 12 – 25 mm
- EAN: 4003773048527
- Dimensions: 140 x 48 x 12 mm
- Weight: 105 g



---

Revision #4

Created 15 January 2022 11:28:03 by Saulius

Updated 15 January 2022 11:47:06 by Saulius