

Firmware

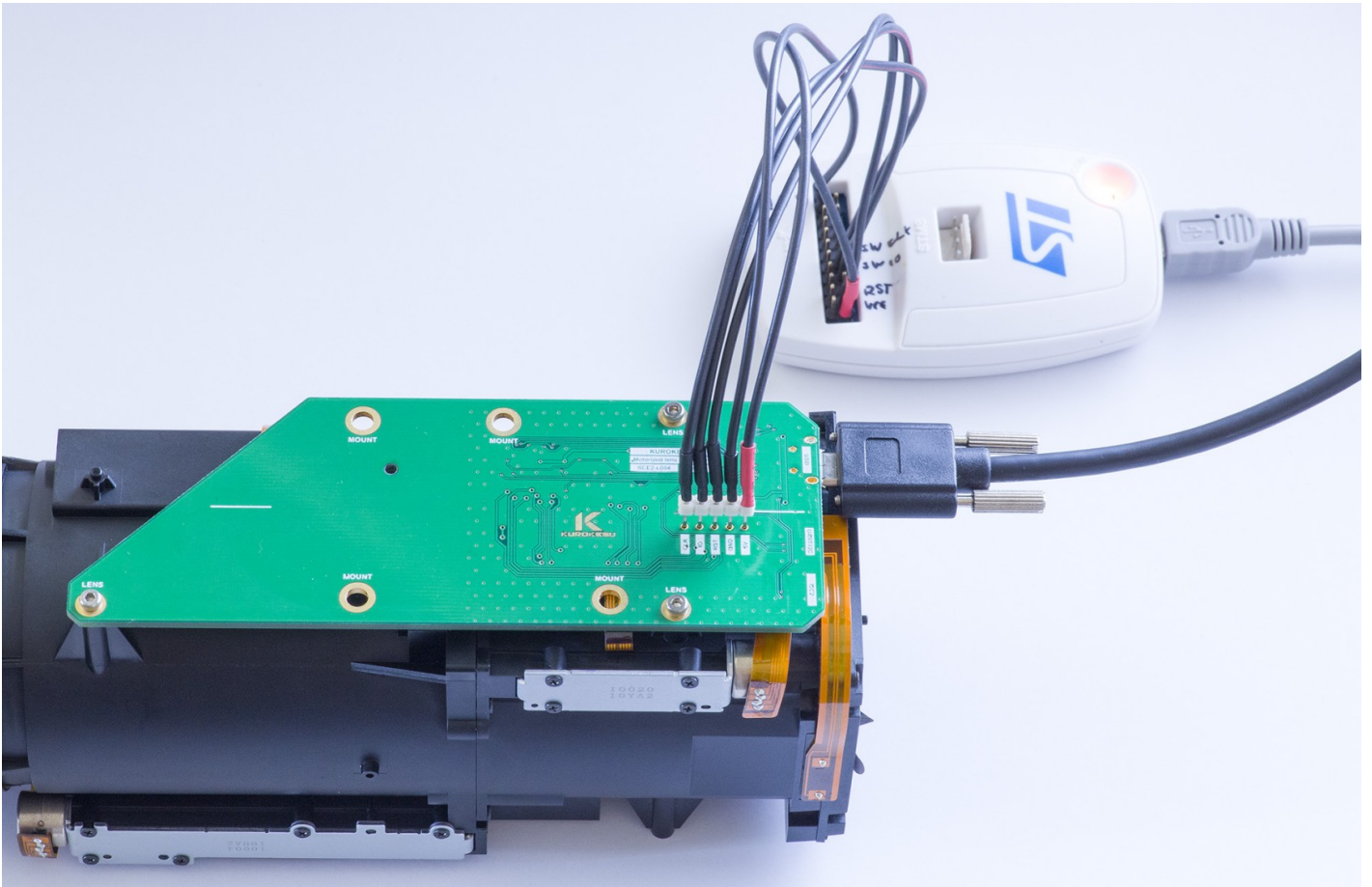
Connectivity

Firmware update can be done over SWD interface with an inexpensive programmer.

- 1. If possible disconnect the lens from the controller.
- 2. Connect programmer to the controller.

ST-LINK/V2 signal (pin)	Controller signal
V _{APP} (1,2)	V _{APP} (3.3-5V)
GND (20)	GND
TRST (3)	RST
TMS_SWDIO (7)	IO
TCK_SWCLK (9)	CLK

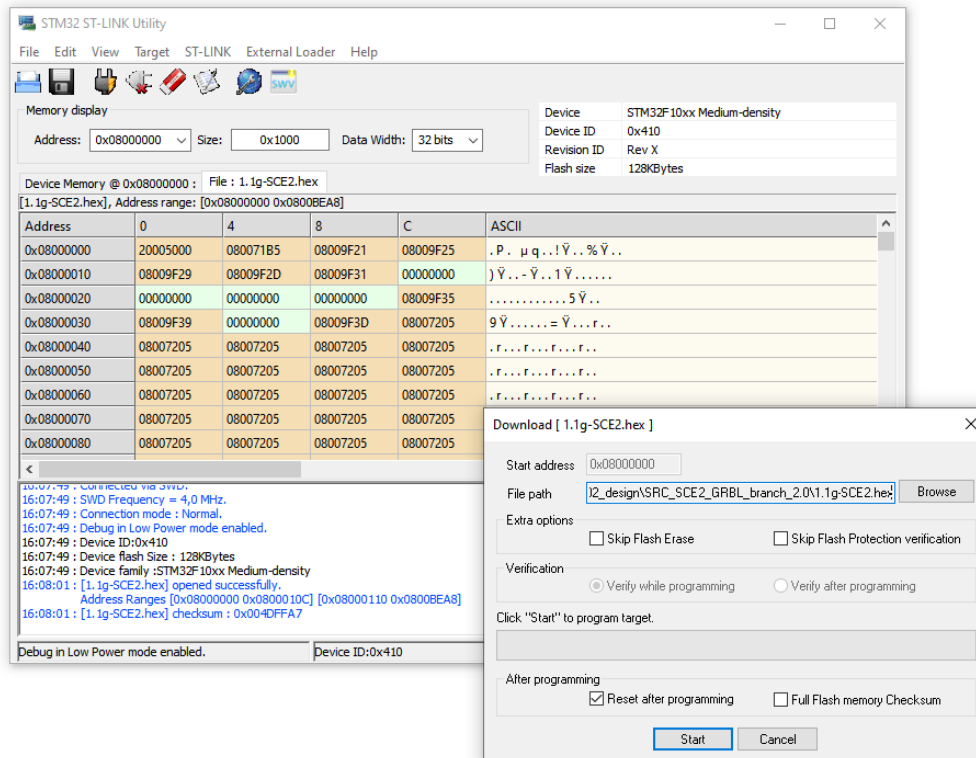
- 3. Connect power supply to the controller.



Firmware update

Before updating firmware, read GRBL parameters! Use [tools](#) to automate the process.

We recommend using original ST-LINK/V2, STLINK-V3SET or STLINK-V3MINI programmer. Download STLINK-UTILITY software from ST, open firmware file and program the microcontroller.



After the firmware update, internal EEPROM content is erased. Lens settings should be updated. Do not connect the lens before restoring settings! Reference parameters and tools for can be found [here](#)

Firmware revisions

Binary firmware files can be downloaded from the SCE2-SDK Github repository.

Version	Date	Changes
1.1f-SCE2	2022-01-19	Initial public release version
1.1g-SCE2	2022-08-21	Fixed axis homing issue

Revision #19

Created 11 September 2020 08:02:06 by Saulius

Updated 25 August 2022 08:09:43 by Saulius