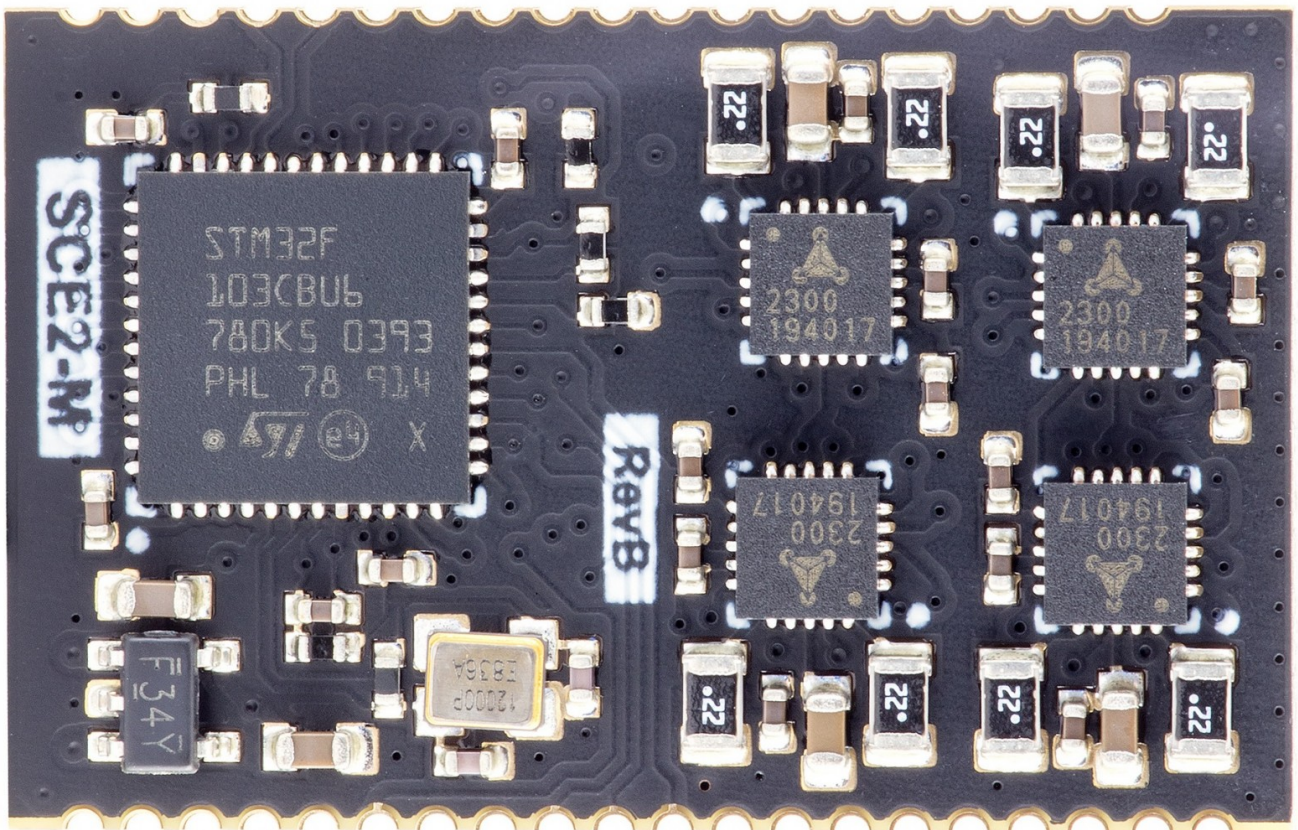


Overview

SCE2-M is a fully integrated stepper motor controller module for digital control for limited space applications. Designed for small 3D printers, laser cutters/engravers, CNC mills, pick and place machines, robots, test fixtures, and other motorized devices. SCE2-M module is the smallest motor controller that requires no external components and runs industry-standard g-code processor with linear interpolation control open-source firmware



Revision #4

Created 27 July 2020 21:05:54 by Saulius

Updated 7 February 2021 12:36:59 by Saulius