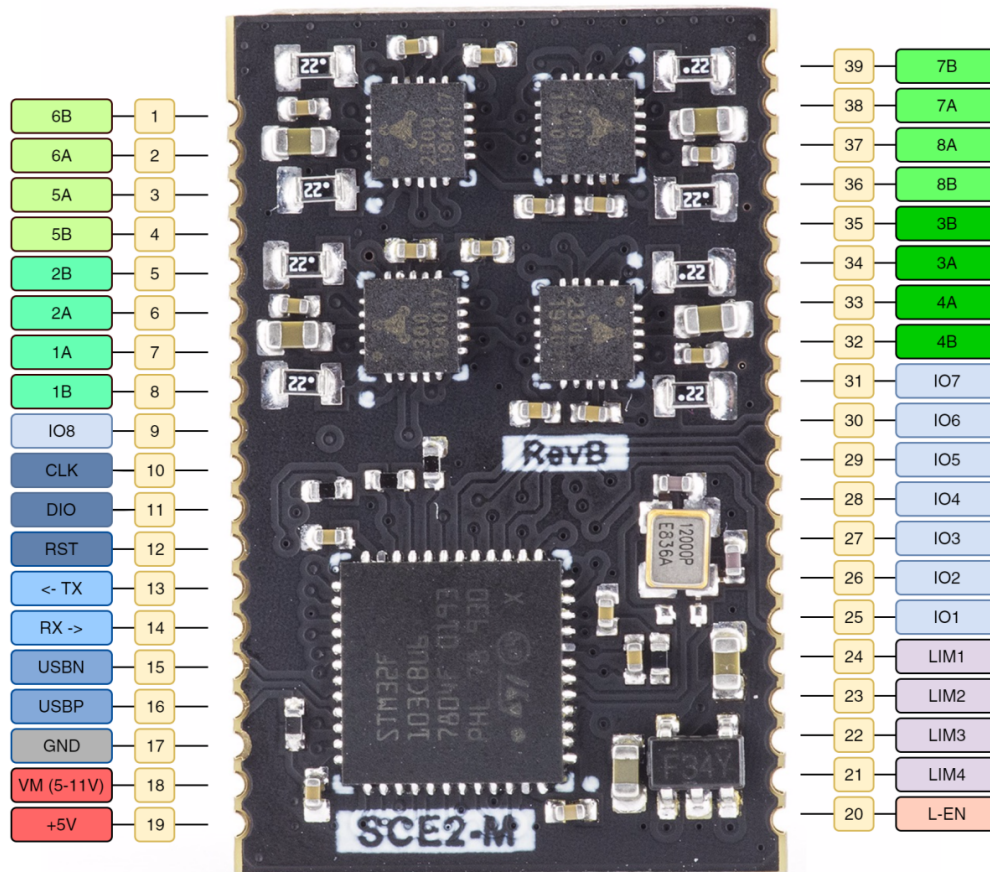


# Pinout

SCE2-M module has some STM32 pins routed to external pads. Pads grouped by functionality provided in tables below.

## Pinout



## GPIO pin mapping table

IO pin	CPU port	Function	CPU features
1	PB1	SPINDLE ENABLE	ADC
2	PB9	PROBE	I2C SDA
3	PA8	PWM OUTPUT	
4	PB4	FLOOD	
5	PB3	MIST	
6	PB0	SPINDLE DIR	ADC
7	PB5	STOP	

8	PB8		I2C SCL
---	-----	--	---------

**PA8 (PWM OUTPUT)** is set to 10kHz frequency, but can be adjusted in firmware.

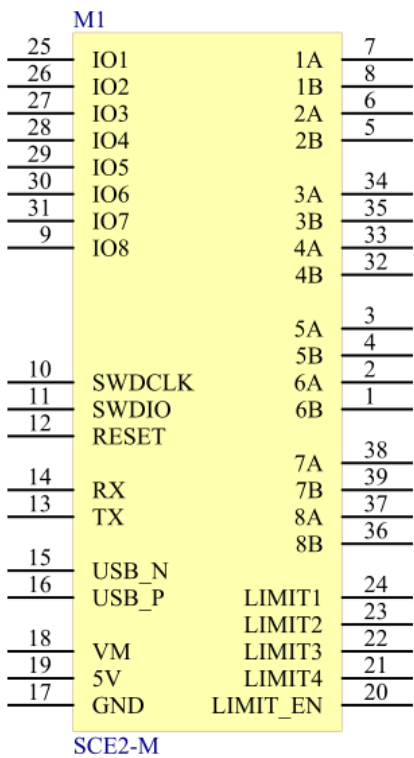
Limit switch mapping table

Port	Net name
PB12	LIMIT1
PB13	LIMIT2
PB14	LIMIT3
PB15	LIMIT4
PA9	LIMIT_EN

UART pin mapping table

CPU port	Net name
PB7	USART1_RX
PB6	USART1_TX

Schematic symbol



5V is used for motor drivers. Logic level of all GPIO pins is 3.3V

---

Revision #8

Created 16 August 2020 11:43:07 by Saulius

Updated 17 October 2021 07:41:35 by Saulius