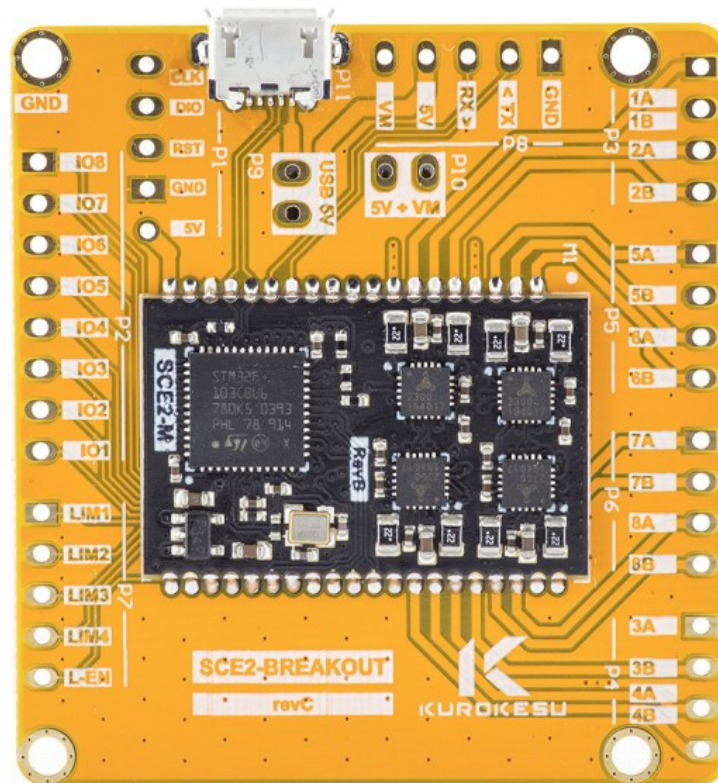
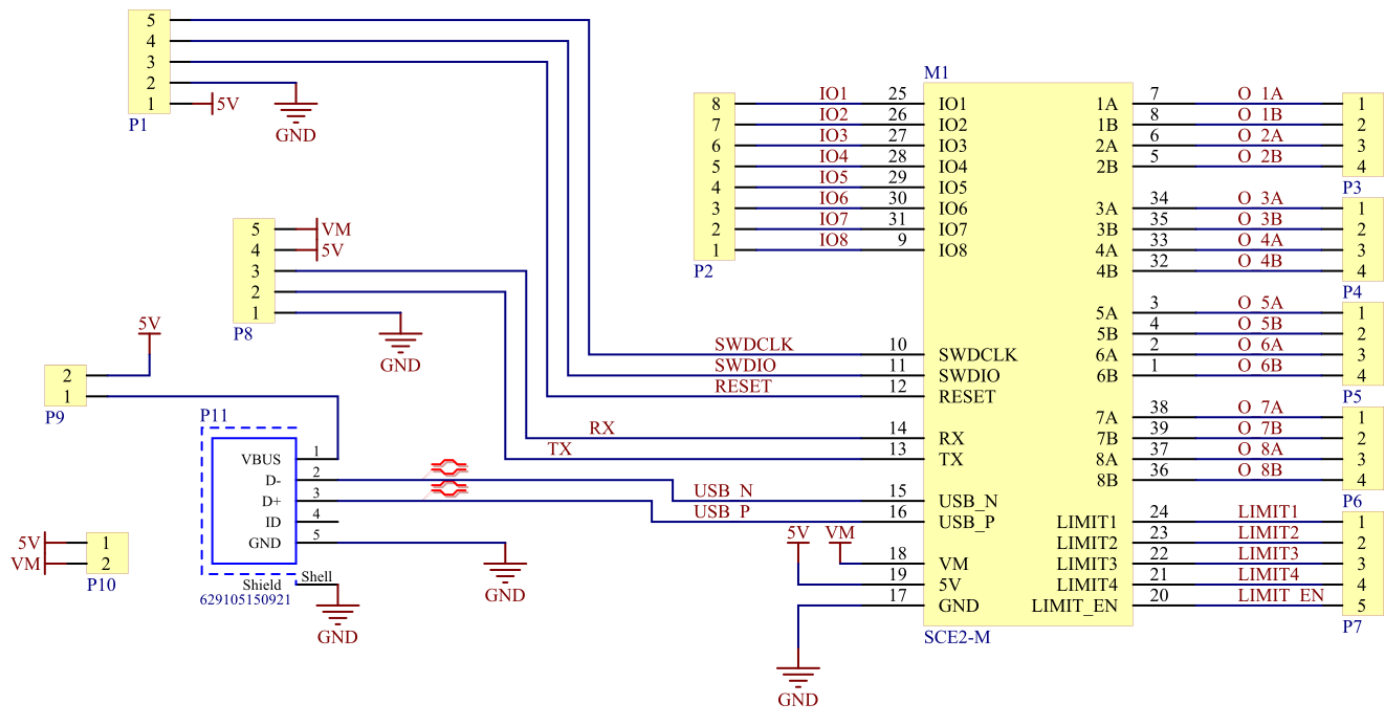


SCE2-BREAKOUT demo board

SCE2-BREAKOUT is a fully integrated stepper motor controller module carrier board for quick SCE2-M module evaluation. Designed for small 3D printers, laser cutters/engravers, CNC mills, pick and place machines, robots, test fixtures, and other motorized devices. SCE2-M module is the smallest motor controller that requires no external components and runs industry-standard g-code processor with linear interpolation control open-source firmware.



Schematics

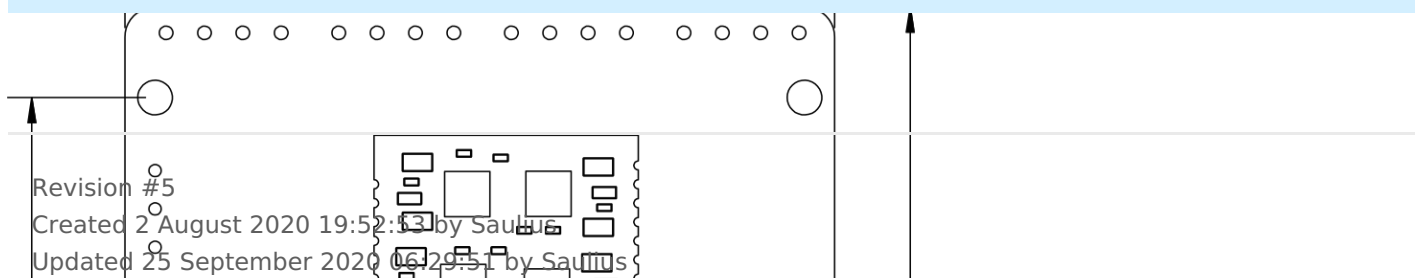


P9 is breaks power supply from USB port. Should be disconnected if power is applied via P8 header

P10 bridges 5V and VM. Should be disconnected if VM is applied via P8

Dimensions

3D STEP file is maintained on [Github](#)



Revision #5
Created 2 August 2020 19:52:13 by Saulius
Updated 25 September 2020 06:29:51 by Saulius